



**Schachenmayr**

— SINCE 1822 —

## Jacket with Short or Long Sleeves

Skill level – Advance

By Schachenmayr Design Team

<b>Technique:</b>	Mixed stitches, rib stitch
<b>Brand:</b>	Schachenmayr

### Size

68-98cm 9m-3yrs

### Yarn

Short sleeve jacket: Schachenmayr original Egypto Cotton colour 2-2-3 balls [100 - 100 - 150g] #00086 raspberry mix

Long sleeve jacket: Schachenmayr original Egypto Cotton, 2-3-3 balls [100 - 150 - 150 g] #00112 linen

### Additional Requirements

One button

1 set of needles 2.75-3mm [US 2-3]

[makeitcoats.com](http://makeitcoats.com)  
[schachenmayr.com](http://schachenmayr.com)

Make it  
COATS



## Jacket with Short or Long Sleeves

### Instructions:

**Rib pattern:** \*K1, P1, rep from \*.

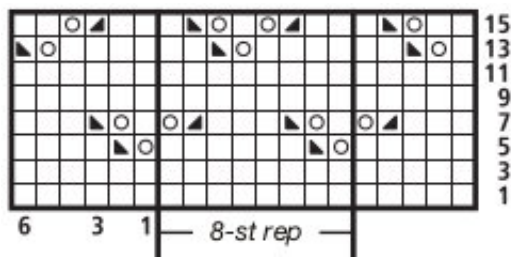
**Lace pattern:** see chart. Only RS rows are shown; in WS rows P all sts and yo.

Rep rows 1 to 16 throughout.

**Note:** When increasing and decreasing make sure that for each yo 2 sts can be worked tog; where this is not poss, K1 instead.

**Gauge:** 25 sts and 40 rows = 4" [10cm].

### Chart for basic pattern



### Legend

- = K1
- = yo
- ▴ = K2tog
- ▣ = sl1k, K1, pss0

**Back:** With raspberry mix or linen cast on 76-84-92 sts and in rib patt work  $\frac{3}{4}$ " [2cm] even, inc 1 st in last WS row = 77-85-93 sts.

Cont with lace patt; after selvage st start as shown, work 8-st rep 8-9-10 times, end as shown, selvage st.

For side shaping dec 1 st after 12-14-16 rows from top of rib once, then 1 st in every 12-14-16th row 3 times = 69-77-85 sts. Cont until work measures  $6\frac{3}{4}$ - $7\frac{1}{2}$ - $8\frac{1}{4}$ " [17- 19-21cm] from cast-on. Bind off for raglan shaping 1 st at beg of foll 2 rows once, then at each end of every 2nd row 2 sts 7 times and 1 st 4-6-6 times, then 1 st in every 4th row 4-5-7 times.

Cont until work measures  $10\frac{5}{8}$ - $12\frac{1}{4}$ - $13\frac{3}{4}$ " [27-31-35cm] altog. Bind off rem 21-23-23 sts.

**Left front:** With raspberry mix or linen cast on 37-42-45 sts and work  $\frac{3}{4}$ " [2cm] rib patt. Cont with lace patt; after selvage st start as shown, work 8-st rep 3-4-4 times, end with sts 1 to 6-3-6 after rep, selvage st. At right edge work side shaping as for back = 33-38-41 sts.

When work measures  $6\frac{3}{4}$ - $7\frac{1}{2}$ - $8\frac{1}{4}$ " [17-19-21cm] from cast-on bind off for raglan shaping at right edge 2 sts once, then in every 2nd row 2 sts 7 times and 1 st 4-6-6 times, then 1 st in every 4th row 2-3-5 times.

When work measures  $8\frac{5}{8}$ - $10\frac{1}{4}$ - $11\frac{3}{4}$ " [22-26-30cm] bind off at left edge for neck 2-4-5 sts once, then in every 2nd row 2 sts 2 times and 1 st 3 times, then bind off rem 2 sts.

Total height of work =  $9\frac{7}{8}$ - $11\frac{3}{8}$ - $13$ " [25-29-33cm].

**Right front:** work in reverse.

**Short left sleeve:** With raspberry mix or linen cast on 54-62-70 sts and work  $\frac{3}{4}$ " [2cm] rib patt. Inc 1 st in last WS row = 55-63-71 sts.

Cont as foll: selvage st, 1 st St st (K RS rows, P WS rows), 51-59-67 sts lace patt (start as shown, work 8-st rep 5-6-7 times, end as shown), 1 st St st, selvage st.

When work measures  $1\frac{1}{8}$ " [3cm] from caston bind off for sleeve cap at each end 1 st once = 53-61-69 sts. Then dec at right edge 1 st in every 4th row 5-7-8 times, then in every 2nd row 1 st 4-2-4 times and 2 sts 7-9-9 times.

At right edge dec 1 st in every 4th row 5-7-8 times, then in every 2nd row 1 st 4-2-4 times and 2 sts 3-5-5 times, Then bind off at this edge for neck for size 68/74 in every 2nd row 3 sts 3 times and 2 sts 2 times, for size 80/86 in every 2nd row 3 sts 5 times, for size 92-98 in every 2nd row 4 sts 2 times and 3 sts 3 times.

Total height of work =  $5\frac{1}{2}$ - $6\frac{1}{4}$ - $7$ " [14-16-18cm].

**Short right sleeve:** work in reverse.

**Long left sleeve:** With linen cast on 42-50-58 sts and work  $\frac{3}{4}$ " [2cm] rib patt. Inc 1 st in last WS row = 43-51-59 sts.

Cont with lace patt; work selvage st, 8-st rep 5-6-7 times, K1, selvage st. At the same time inc for sleeve shaping at each end 1 st after 2-2-10 rows once, then 1 st in every 10-12-12th row 5 times = 55-63-71 sts.

Take incs into lace patt.

When work measures  $6\frac{3}{4}$ - $7\frac{1}{2}$ - $8\frac{1}{4}$ " [17-19-21cm] from cast-on work for sleeve cap and neck shaping as for short left sleeve. Total height of work =  $11$ - $12\frac{1}{2}$ - $14\frac{1}{8}$ " [28-32-36cm].

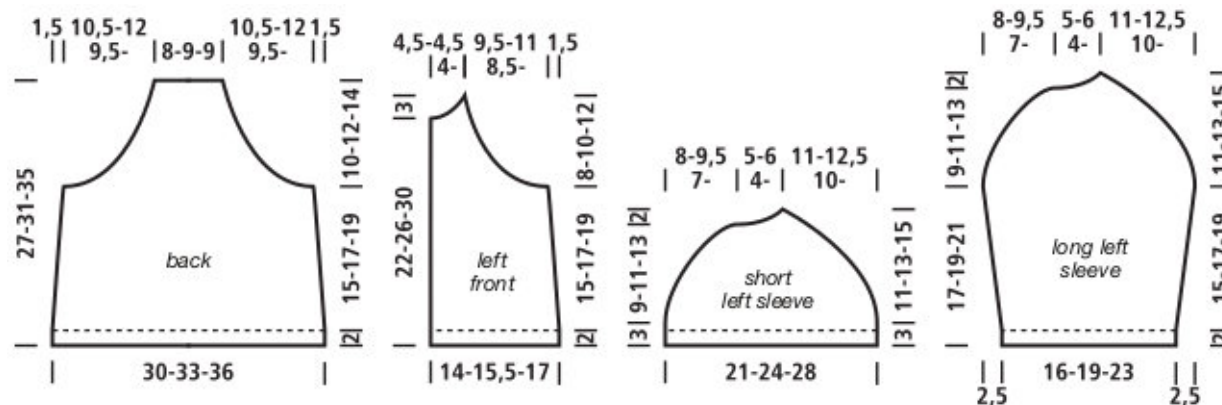
**Long right sleeve:** work in reverse.

**Finishing:** block pieces to measurements, cover with a damp cloth and allow to dry. Sew sleeve caps to raglan shaping of back and fronts, then close sleeve and side seams.

For each front jacket bands pick up with raspberry mix or linen about 59-69-79 sts, P 1 WS row and work  $\frac{3}{4}$ " [2cm] rib patt, then bind off all sts.

For neck band pick up with raspberry mix or linen about 69-77-85 sts and P 1 WS row, then work in rib patt. When band measures  $\frac{3}{8}$ " [1cm] make buttonhole in RS row as foll: work selvage and 3 in patt, then bind off 2. In foll row cast on 2 across those bound off. When band measures  $\frac{3}{4}$ " [2cm] bind off all sts loosely.

Sew on button.



<b>Babies, toddlers</b>	68	74	80	86	92	98
<b>Age [approx. months]</b>	9	12	15	18	24	36
<b>Height</b>	26 ¾" [68 cm]	29 ¼" [74 cm]	31 ½" [80 cm]	33 ¾" [86 cm]	36 ¼" [92 cm]	38 ½" [98 cm]
<b>Chest</b>	19 ¼" [49 cm]	20" [51 cm]	20 ¾" [53 cm]	21 ¾" [55 cm]	22" [56 cm]	22½" [57 cm]
<b>Hips</b>	19 ¾" [50 cm]	20 ½" [52 cm]	21 ¼" [54 cm]	22" [56 cm]	22 ½" [57 cm]	23 ¼" [59 cm]

## Tension

Even if your fingers are itching to start making up your design - always work a tension swatch with the original yarn first. Only then can you decide which needle size is right for you.

With the original yarn and the needle size given, make up a square measuring 5x5" [12x12cm] in the appropriate patt and treat this as you would the completed garment: block to measurements, cover with a damp cloth and allow to dry. Count out the number of stitches and rows at the centre of the piece to measure 4" [10cm] in height and width. Omit the edge stitches, along with the stitches for casting on and off, as these distort the figures. Compare these figures with those given in the Method: If you have more stitches and rows, you will need to use larger needles; if you have fewer stitches and rows, you work too loosely and need smaller needles.

## Care

After all the time and effort you have invested in making up your garment, it deserves the greatest of care. The label around the ball of yarn will show you how to care for the yarn you have used. Always keep the label together with a piece of the yarn, along with a note indicating which garment this

refers to, so that you can refer back to this at any time. If you are giving your item away, always include the label and a yarn remnant, so that it might be repaired if necessary at a later date.

## Customer service

Should you have questions regarding any of our designs, our website will provide you with lots of useful information as well as contact details of our Customer Service department.

Errata and amendments to our instructions are given on our website.

When sending a query, please always state the publication and design number, and also give precise details of your inquiry. Many thanks.

For more information go to [www.schachenmayr.com](http://www.schachenmayr.com) to select your country.

## Abbreviations

CN	cable needle
cont	continue
dc	double crochet [UK = tr]

dec	decrease(s)
dtr	double trebles
fol	follows/ing
g	grams
htr	half trebles
inc	increase(s)
K	knit
LH	left hand
m	metres
mm	millimetres
P	purl
patt	pattern
rep	repeat
resp	respective
rev St-st	reversed stocking stitch
RH	right hand
RS	right side
sc	single crochet [UK = dc]
st(s)	stitch(es)
St-st	stocking stitch
tbl	through back of loop
tog	together
tr	trebles
WS	wrong side